

Upholstery collection

Legend

Legenda

The material chosen to complete a furnishing, to upholster a sofa, an armchair, to dress a wall, is a decisive feature in translating each object into something exclusive and creating the atmosphere in a room. The upholstery and finishes of each piece of furniture must be studied down to the smallest details. This is the reason why Zona Living has selected high-performance fabric and eco-leather collections capable of transforming every item in something special. Fabrics and materials specifically for the contract industry, developed according to the strictest safety standards, resistant and safety for the environment and the human being with a delightful texture to the touch, perfect for refined sofas, armchairs and furnishings.

Il materiale scelto per completare un arredo, per rivestire un divano, una poltrona, per vestire una parete, è elemento determinante nel trasformare ogni oggetto in qualcosa di unico e creare atmosfera in un ambiente. Il rivestimento e le finiture di ogni arredo vanno studiate nei minimi dettagli. Per questo Zona Living ha selezionato collezioni di tessuti e eco-pelli, altamente performanti e al tempo stesso capaci di trasformare ogni oggetto in qualcosa di speciale. Tessuti e materiali per l'industria contract, progettati secondo i più elevati standard di sicurezza, resistenti e sicuri per l'ambiente e la persona con una piacevole consistenza al tatto, perfetti per divani, poltrone e complementi d'arredo raffinati.



HAND WASH
LAVAGGIO A MANO



DO NOT WASH
NON LAVARE



DO NOT BLEACH
NON CANDEGGIARE



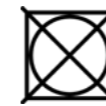
DRY CLEAN, PERCHLORETHYLENE (PCE)
LAVAGGIO A SECCO CON PERCLOROETILENE (PCE)



DO NOT DRY CLEAN
NON LAVARE A SECCO



REVERSE IRONING AT LOW TEMPERATURE
STIRARE A ROVESCIO A BASSA TEMPERATURA



DO NOT TUMBLE DRY
NON ASCIUGARE IN ASCIUGATRICE



DO NOT IRON
NON STIRARE

Eco pelle cod. 0300 FR

In accordance with the spirit of respecting nature and with an innovative approach to avant-garde materials, we propose phthalate free faux leathers with very high qualitative and technological standards: fire, tear, light and water resistance.

Fire retardant, and durable, it is well suited for any use in contract work, because it is flexible and nice to the touch.

In terms of colour, a range of 70 colours allows you to be creative and complete every single version with the ideal nuance.

Nel rispetto della natura e con uno spirito innovativo verso materiali all'avanguardia, vengono proposte finte pelli phthalate free, con altissimi standard qualitativi e tecnici: resistenza al fuoco, strappi, alla luce e all'acqua. Fire retardant, e resistente, si adatta a qualsiasi uso contract, perché elastica e piacevole al tocco.

Inoltre, una gamma di 70 colori, consente di dare spazio alla creatività e di completare ogni modello con la giusta nuance.

COMPOSITION
COMPOSIZIONE

PVC 88%, PS (polyester) 6%, CO (cotton) 6%

HEIGHT
ALTEZZA

cm ≥ 140

WEIGHT
PESO

<. Gr/rntl 650 ± 5%

ABRASION
ABRASIONE

Giri ≥ 100.000

LIGHT FASTNESS
SOLIDITÀ ALLA LUCE

≥ 7

RUBBING FASTNESS
RESISTENZA ALLO SFREGAMENTO

≥ 4

SEAM RESISTANCE
RESISTENZA DELLE CUCITURE

N ≥ 200

CERTIFICATES
CERTIFICATI

1IM - UNI 9175
EN 1021 part 1/2
NF-D 60 013 (AM 18)
BS 5852 (crib5)
BS 5852 part 1, is 0&1

NFPA 260
US CA TB 117:2013
IMO MED - FTP Code 307
part 8
ÖNOM B 3825

CLEANING
LAVAGGIO



CATEGORY

Eco pelle

0300 FR



001



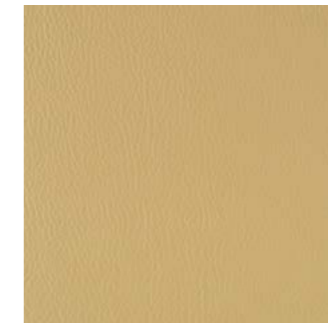
01



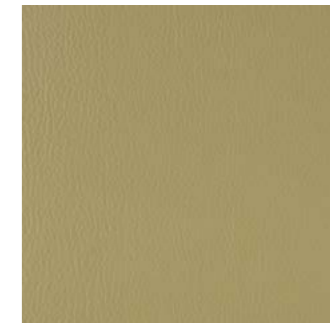
02



03



04



06



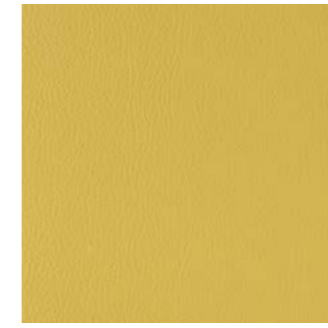
08



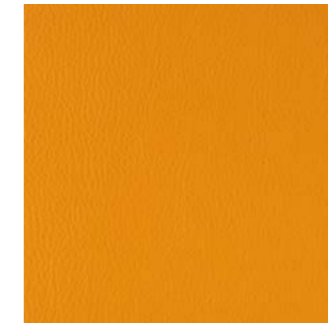
10



11



12



13



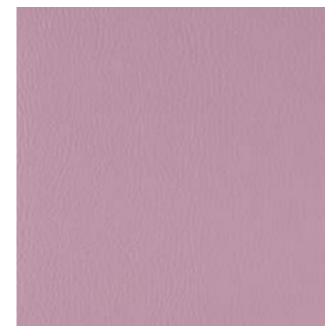
15



17



19



20



21



22



25



26



27



31



33



35



36



37



42



44



45



46



50

Eco pelle

0300 FR



51



55



56



80



100



101



103



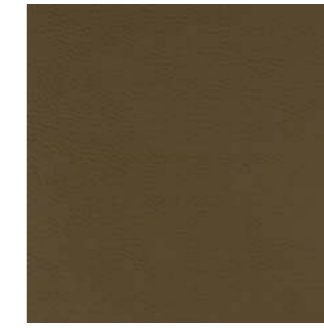
301



303



400



405



407



408



411



412



413



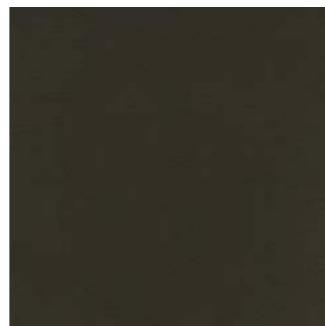
414



415



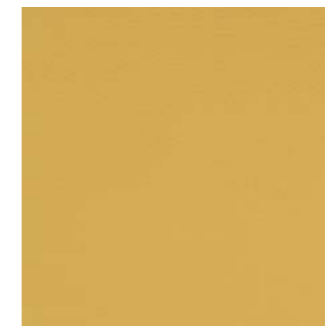
416



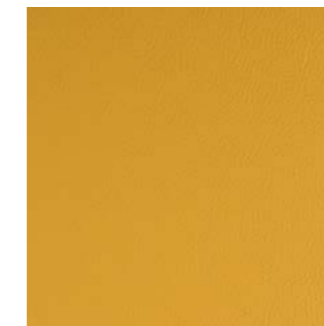
419



502



504



505



600



601



602



603



604



606



608

Eco pelle

0300 FR



609



610



611



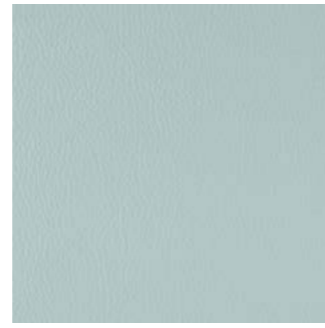
700



701



702



703



706



707



800



801



803



806



807



900



901

Mélange

cod. 8501 FR

Delavé colours and a mixture of nuances evoke emotions and recall the shades of mother nature.
Special weaving techniques lend the textile a lovely look and a soft touch.
Different tone blends, either gentle and mellow, or more vivid and well-defined, bold.
Chromatic memories to cover furniture that is full of charm.

Colori delavè, mescolanza di nuance evocano emozioni e ricordano le sfumature della natura.
Tecniche di tessitura particolari conferiscono al tessuto un aspetto gradevole ed una mano morbida. Diverse combinazioni di toni, soft e delicati, o più vivi e definiti, decisi.
Ricordi cromatici per rivestire arredi carichi di fascino.

COMPOSITION
COMPOSIZIONE

PS (polyester) 70%, PU (polyurethane) 20%,
CO (cotton) 10%

HEIGHT
ALTEZZA

cm ≥ 140

WEIGHT
PESO

<. Gr/rntl 990 ± 5%

ABRASION
ABRASIONE

Giri ≥ 40.000

PILLING

≥ 4/5

LIGHT FASTNESS
SOLIDITÀ ALLA LUCE

≥ 4

STABLE SIZE IN WATER
DIMENSIONE STAB IN ACQUA

% 0,5 ± 0,5 %

COLOUR FASTNESS TO WASHING
RESISTENZA COLORE AL LAVAGGIO

≥ 4

RUBBING FASTNESS
RESISTENZA ALLO SFREGAMENTO

≥ 4

SEAM RESISTANCE
RESISTENZA DELLE CUCITURE

N ≥ 200

CERTIFICATES
CERTIFICATI

Class 1 IM
UNI 9175:2010
UNI 9176:2010
US CA TB 117:2013
BS5852 cigarette and
match test

EN 1021 part 1/2
IMO MED - FTP Code 307
part 8
OEKO-TEX
STANDARD 100
18CX00080 CENTROCOT

CLEANING
LAVAGGIO



CATEGORY

Mélange

8501 FR



101



102



103



106



107



108



109



110



111



112



113



114



116



120



121



122



123



124



125



126



127



128



129



130



131



132



133



134



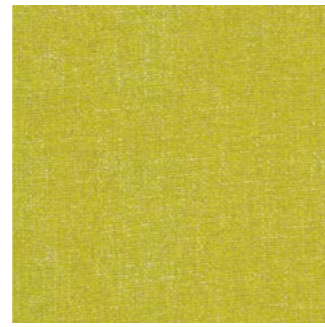
135



136

Mélange

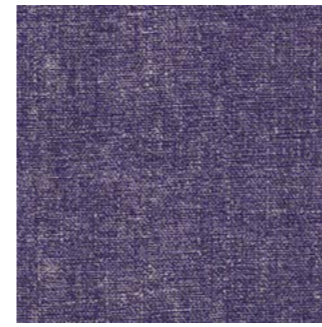
8501 FR



137



138



139



140



141



142



143



144



145



146



147



148



149



150

Sweet Velvet

cod. 8336 FR

A resilient velvet, extremely hand pleasing, made for Contract and Hospitality and Ship use, with outstanding performance, which is unique in its field. It is also especially suited for use on residential interiors requiring easy operation and low requirements for cleaning.

The colour options, a genuinely wide palette, enhance the fibre's features and are both surprising and powerful.

Soft and cosy, it gives ambience a warm touch of bon ton.

Easy to maintain, fire-retardant, extremely resistant to abrasion and tearing, colour-stable in light, in washing and in rubbing and it performs with unfailing precision in the resistance to running ripples.

Un velluto resistente, piacevolissimo alla mano, realizzato per il settore Contract e Hospitality e per uso navale, con alte prestazioni, unico nel suo genere. Particolarmente indicato anche per allestimenti residenziali che richiedano facilità d'uso e minimi vincoli di manutenzione.

Le varianti colore, una palette davvero ricca, enfatizzano le caratteristiche della fibra e risultano sorprendenti e potenti.

Soffice e avvolgente riscalda gli ambienti con un tocco bon ton.

Facile da pulire, ignifugo, altamente resistente all'abrasione e alla rottura, stabile al colore, in termini di luce, di lavaggio e di sfregamento e si comporta con impeccabile rigore per resistenza allo scorrimento delle cuciture.

COMPOSITION
COMPOSIZIONE

PS (polyester) 55%, PU (polyurethane) 35%,
CO (cotton) 10%

HEIGHT
ALTEZZA

cm ≥ 140

WEIGHT
PESO

<. Gr/rntl 990 ± 5%

ABRASION
ABRASIONE

Giri ≥ 50.000

PILLING

≥ 4/5

LIGHT FASTNESS
SOLIDITÀ ALLA LUCE

≥ 4

STABLE SIZE IN WATER
DIMENSIONE STAB IN ACQUA

% 0,5 ± 0,5 %

COLOUR FASTNESS TO WASHING
RESISTENZA COLORE AL LAVAGGIO

≥ 4

RUBBING FASTNESS
RESISTENZA ALLO SFREGAMENTO

≥ 4

SEAM RESISTANCE
RESISTENZA DELLE CUCITURE

N ≥ 200

CERTIFICATES
CERTIFICATI

Class 1 IM
UNI 9175:2010
UNI 9176:2010
US CA TB 117:2013
BS5852 cigarette and
match test

EN 1021 part 1/2
IMO MED - FTP Code 307
part 8
OEKO-TEX
STANDARD 100
18CX00080 CENTROCOT

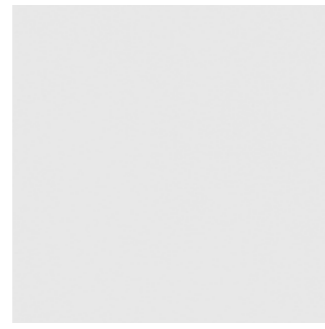
CLEANING
LAVAGGIO



CATEGORY

Sweet Velvet

8336 FR



001



003



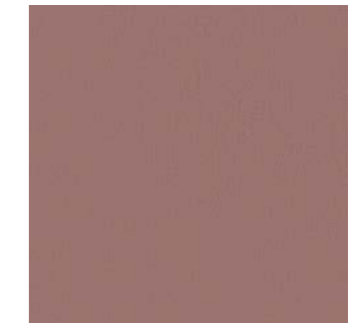
004



005



010



011



015



027



029



030



031



032



033



034



035



036



037



038



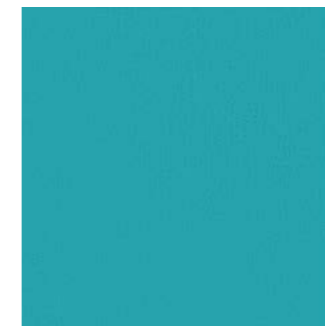
039



040



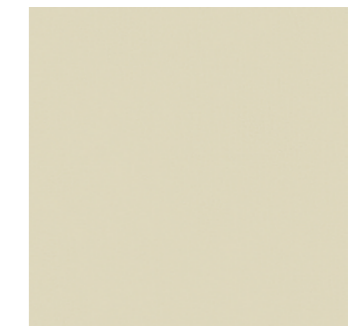
041



042



043



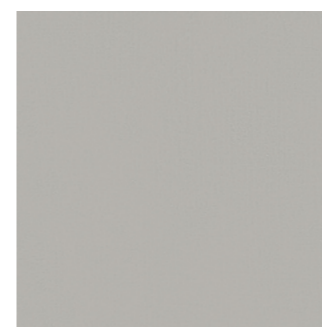
051



052



053



054



055



056



057

Sweet Velvet

8336 FR



058



059



060



061



062



076

Microfibra cod. 4267 FR

An innovative and high-tech mix created a nubuck texture. A fabric with outstanding properties also in respect of strength and durability, which is suitable for a broad spectrum of uses. It is also suitable for limitless colouring, finishing and other effects.

Thanks to its characteristics and peculiarities, it is increasingly appreciated in international markets and is chosen by many designers to complete furnishings.

Una combinazione innovativa e tecnologica ha dato vita ad un tessuto effetto nabuk. Un materiale con proprietà tecniche elevatissime anche in termini di resistenza e durabilità, adatto ad un'ampia gamma di applicazioni. Si presta inoltre a illimitate coloriture, effetti e finissaggi.

Grazie alle sue caratteristiche e peculiarità, riscontra un apprezzamento sempre crescente nei mercati internazionali ed è scelto da molti designer per completare arredi e sedute.

COMPOSITION
COMPOSIZIONE

PS (polyester) 70%, PU (polyurethane) 20%,
CO (cotton) 10%

HEIGHT
ALTEZZA

cm ≥ 140

WEIGHT
PESO

<. Gr/rntl 990 ± 5%

ABRASION
ABRASIONE

Giri ≥ 40.000

PILLING

≥ 4/5

LIGHT FASTNESS
SOLIDITÀ ALLA LUCE

≥ 4

STABLE SIZE IN WATER
DIMENSIONE STAB IN ACQUA

% 0,5 ± 0,5 %

COLOUR FASTNESS TO WASHING
RESISTENZA COLORE AL LAVAGGIO

≥ 4

RUBBING FASTNESS
RESISTENZA ALLO SFREGAMENTO

≥ 4

SEAM RESISTANCE
RESISTENZA DELLE CUCITURE

N ≥ 200

CERTIFICATES
CERTIFICATI

Class 1 IM
UNI 9175:2010
UNI 9176:2010
US CA TB 117:2013
BS5852 cigarette and
match test

EN 1021 part 1/2
IMO MED - FTP Code 307
part 8
OEKO-TEX
STANDARD 100
18CX00080 CENTROCOT

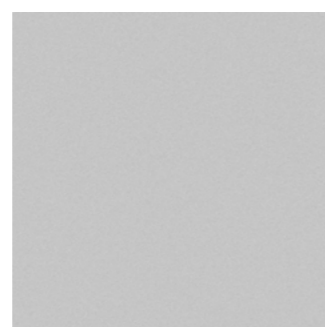
CLEANING
LAVAGGIO



CATEGORY

Microfibra

4267 FR



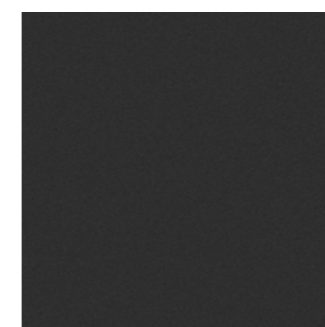
005



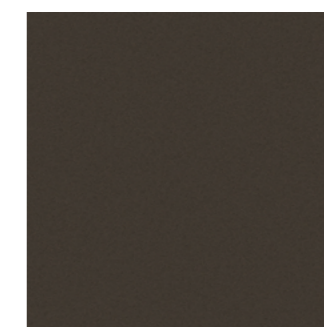
011



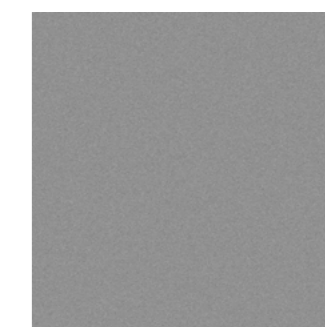
012



013



014



015



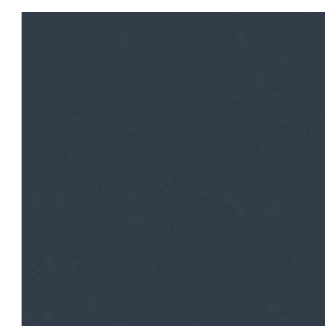
016



017



018



019



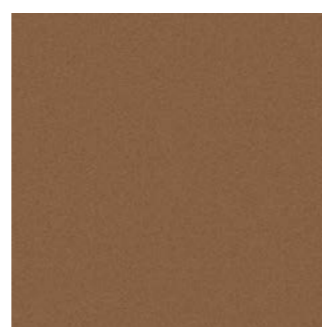
022



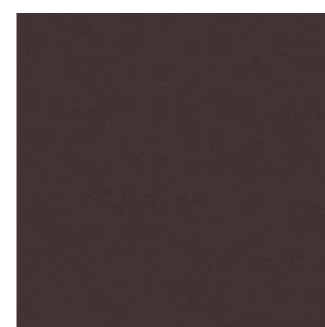
025



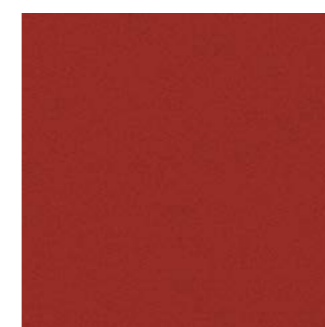
026



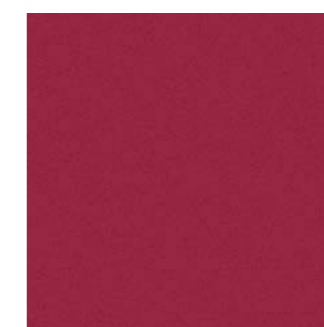
027



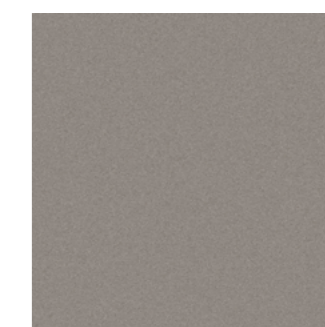
028



029



030



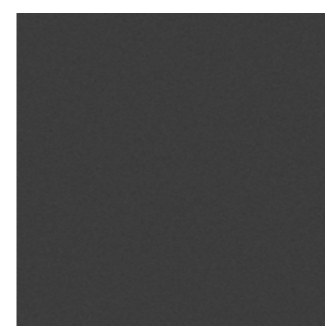
035



037



042



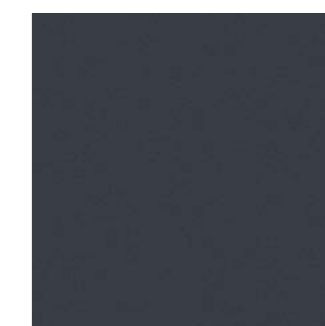
044



045



046



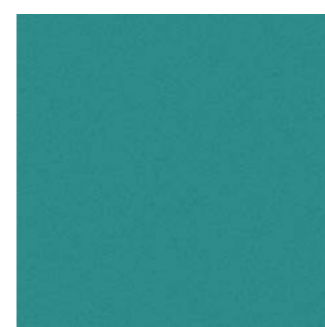
047



048



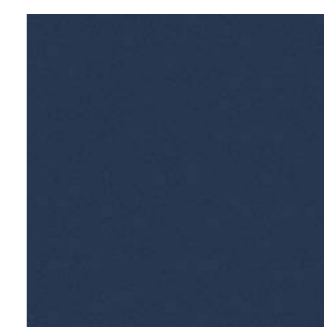
049



050



053



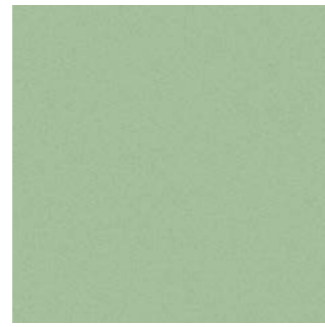
057



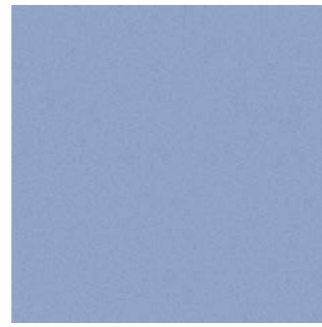
059

Microfibra

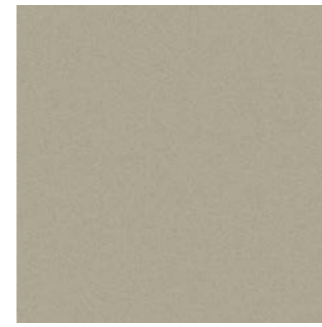
4267 FR



060



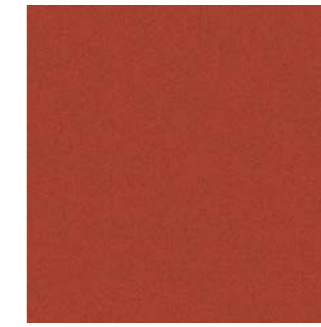
061



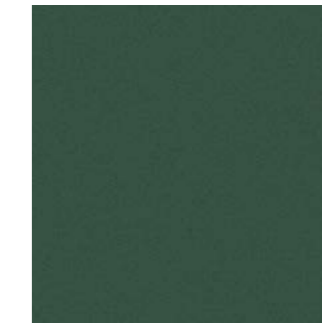
066



067



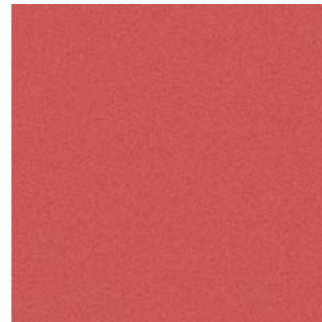
068



069



074



075



076



077



078



079



085



086



087



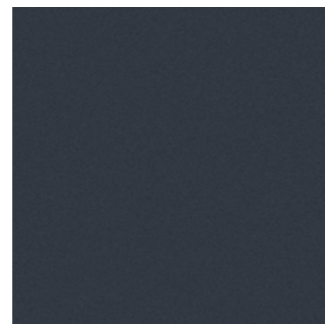
089



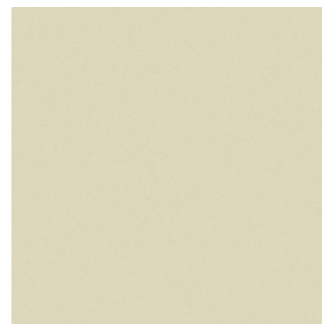
094



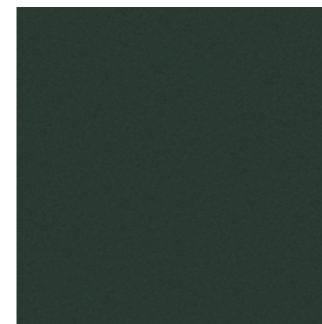
097



204



301



316



319

Teddy Bouclè

cod. 8800

Teddy bouclè fabric is very soft, very comfortable and at the same time full-bodied, with excellent strength and hold. This characteristic fabric, first introduced more than 70 years ago by Coco Chanel in her fabulous blazers, immediately became popular worldwide and, as is often the trend, styles, colours and materials found their way onto the catwalks. Bouclè has a slightly irregular texture, with knots or curls on the surface, and gives a warm and cosy feeling to the home. While trends come and go, the elegance of Teddy fabric is timeless.

Tessuto tipo bouclè Teddy è molto morbido, confortevole e al tempo stesso corposo, con un'ottima resistenza e tenuta. Questo particolare tessuto, introdotto per la prima volta più di 70 anni fa da Coco Chanel con le sue fantastiche giacche, divenne subito famoso in tutto il mondo, e come spesso succede le tendenze passano per le passerelle, gli stili, i colori e i materiali arrivano anche nell'ambiente dell'arredamento. Il bouclè ha un aspetto leggermente irregolare, con nodi o ricci in superficie, e infonde una sensazione di calore e accoglienza alle case. Le tendenze vanno e vengono, ma l'eleganza del tessuto Teddy è senza tempo.

COMPOSITION
COMPOSIZIONE

PS (polyester) 55%, PU (polyurethane) 35%,
CO (cotton) 10%

HEIGHT
ALTEZZA

cm ≥ 140

WEIGHT
PESO

<. Gr/rntl 990 ± 5%

ABRASION
ABRASIONE

Giri ≥ 40.000

PILLING

≥ 4/5

LIGHT FASTNESS
SOLIDITÀ ALLA LUCE

≥ 4

STABLE SIZE IN WATER
DIMENSIONE STAB IN ACQUA

% 0,5 ± 0,5 %

COLOUR FASTNESS TO WASHING
RESISTENZA COLORE AL LAVAGGIO

≥ 4

RUBBING FASTNESS
RESISTENZA ALLO SFREGAMENTO

≥ 4

SEAM RESISTANCE
RESISTENZA DELLE CUCITURE

N ≥ 200

CERTIFICATES
CERTIFICATI

Class 1 IM
UNI 9175:2010
UNI 9176:2010
US CA TB 117:2013
BS5852 cigarette and
match test

EN 1021 part 1/2
IMO MED - FTP Code 307
part 8
OEKO-TEX
STANDARD 100
18CX00080 CENTROCOT

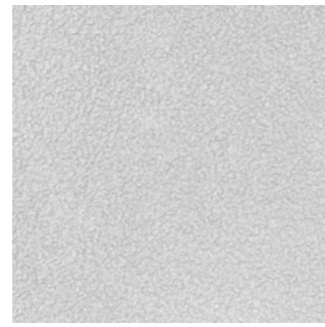
CLEANING
LAVAGGIO



CATEGORY

Teddy Bouclè

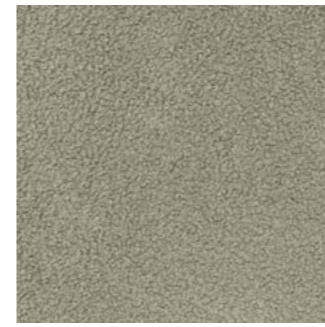
8800



001



002



003



004



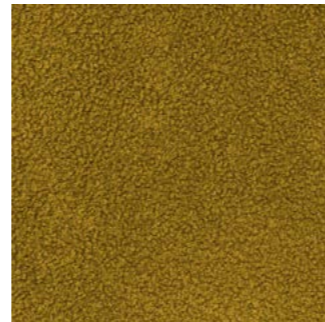
005



006



007



008



009



010



011



012



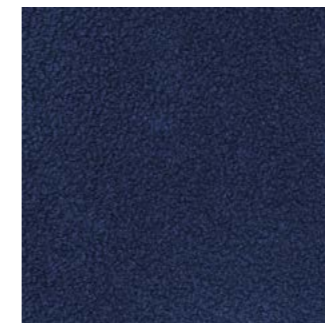
013



014



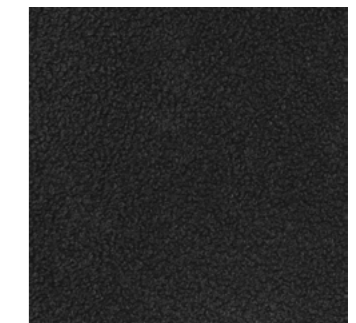
015



016



017



018



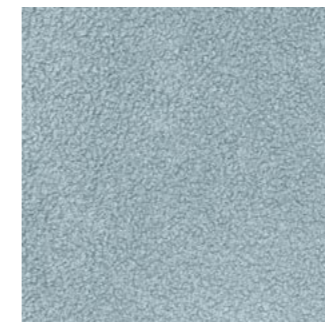
037



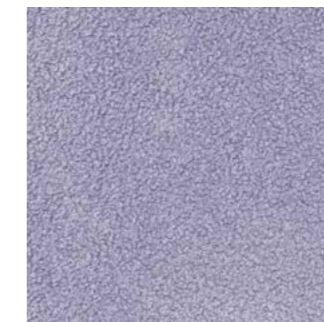
038



039



040



041



042



043



096



098

Velluto inciso cod. 8336 FR

This is a velvet worked with modern techniques and with superlative features, in respect of resistance and duration, which thanks to special incisions becomes unbelievably versatile and aesthetically appealing and sophisticated.

We find linear patterns that make the velvet striped (cod. 01494 FR), or with hexagonal geometries with beehive effect (cod. 05106 FR), (05208FR), rhomboidal (05220 FR), weave pattern (05147FR) or topstitching effect (05199 FR), (05154 FR), creating sinuous lines in some cases (05189FR), up to imaginative crocus in relief (05139FR), crocodile pattern (05152FR) and soft crocodile (05219FR).

It is easy to clean, flame retardant, extremely abrasion and break resistant, impervious to light, washing and rubbing and provides excellent seam slip resistance. It is certified for all contract uses, as well as for the marine field.

Si tratta di un velluto operato, con moderne tecnologie e dalle caratteristiche superlative, in termini di durabilità e resistenza, che grazie alle particolari incisioni diventa incredibilmente versatile ed esteticamente accattivante e ricercato.

Troviamo incisioni lineari che rendono il velluto rigato (cod. 01494 FR), o con geometrie esagonali effetto alveare (cod. 05106 FR), (05208FR), romboidali (05220 FR), ad effetto intreccio (05147FR) o puntature (05199 FR), (05154 FR), che in alcuni casi creano linee sinuose (05189FR), fino a fantasiosi crocus in rilievo (05139FR), pattern crocodile (05152FR) e crocodile soft (05219FR).

È facile da pulire, ignifugo, altamente resistente all'abrasione e alla rottura, stabile al colore, in termini di luce, lavaggio e sfregamento, inoltre garantisce un'ottima resistenza allo scorrimento delle cuciture. Certificato per tutti gli utilizzi contract, compreso il settore navale.

COMPOSITION
COMPOSIZIONE

PS (polyester) 55%, PU (polyurethane) 35%,
CO (cotton) 10%

HEIGHT
ALTEZZA

cm ≥ 140

WEIGHT
PESO

<. Gr/rntl 990 ± 5%

ABRASION
ABRASIONE

Giri ≥ 50.000

PILLING

≥ 4/5

LIGHT FASTNESS
SOLIDITÀ ALLA LUCE

≥ 4

STABLE SIZE IN WATER
DIMENSIONE STAB IN ACQUA

% 0,5 ± 0,5 %

COLOUR FASTNESS TO WASHING
RESISTENZA COLORE AL LAVAGGIO

≥ 4

RUBBING FASTNESS
RESISTENZA ALLO SFREGAMENTO

≥ 4

SEAM RESISTANCE
RESISTENZA DELLE CUCITURE

N ≥ 200

CERTIFICATES
CERTIFICATI

Class 1 IM
UNI 9175:2010
UNI 9176:2010
US CA TB 117:2013
BS5852 cigarette and
match test

EN 1021 part 1/2
IMO MED - FTP Code 307
part 8
OEKO-TEX
STANDARD 100
18CX00080 CENTROCOT

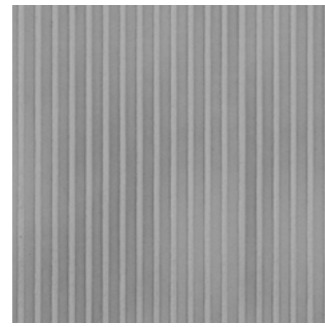
CLEANING
LAVAGGIO



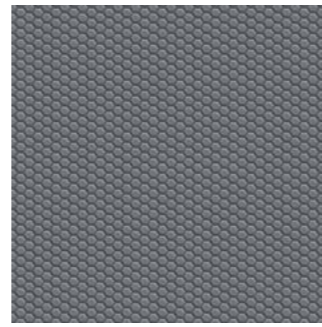
CATEGORY

Velluto Inciso

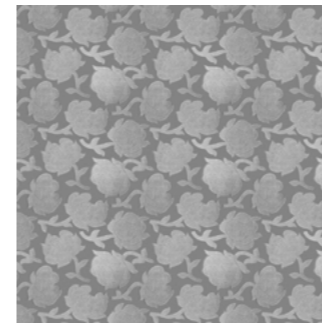
8336 FR



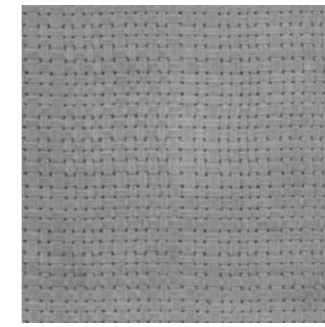
1494



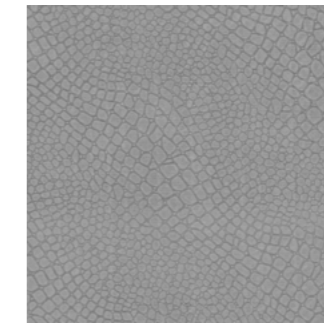
5106



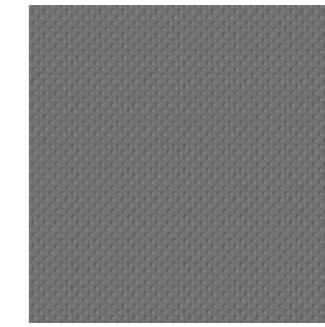
5139



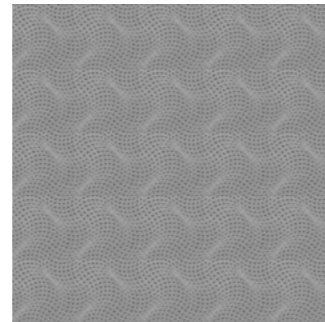
5147



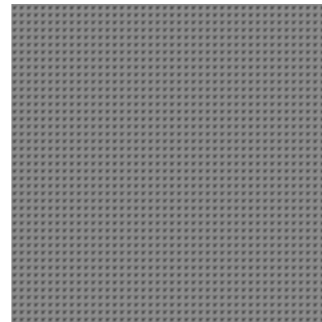
5152



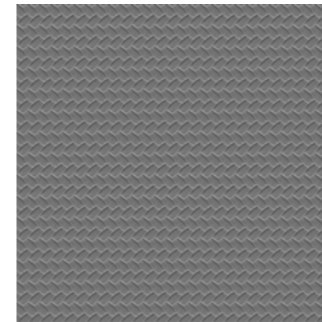
5154



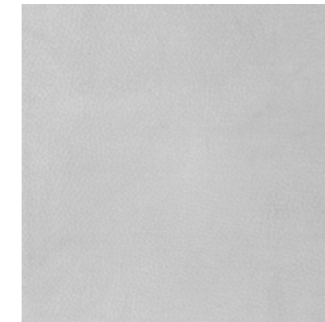
5189



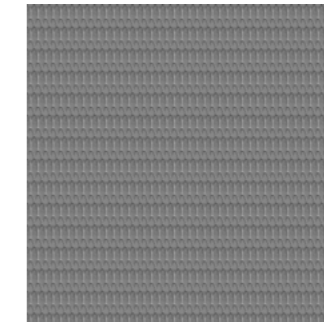
5199



5208



5219



5220

Velluto Fila cod. 5021

Striped print on velvet.
A monochrome velvet, compactly printed with vertical stripes, one of the most popular textures in interior design in both contemporary and classic contexts. Simple, essential forms, sobriety, colour. A refined velvet with a timeless style. It is easy to clean, fire-retardant, highly resistant to abrasion and breakage, unaffected by light, washing and rubbing, and guarantees excellent resistance to seam slippage. Certified for all contract uses, including the yacht industry.

Stampa a righe su velluto.
È un velluto monocolore, stampato a righe verticali compatte, una delle texture più scelte nell'interior design sia in ambientazioni contemporanee che classiche. Linee semplici ed essenziali, sobrietà, colore. Un velluto ricercato, dallo stile intramontabile.
È facile da pulire, ignifugo, altamente resistente all'abrasione e alla rottura, stabile al colore, in termini di luce, di lavaggio e di sfregamento, inoltre garantisce un'ottima resistenza allo scorrimento delle cuciture. Certificato per tutti gli utilizzi contract, compreso il settore navale.

COMPOSITION
COMPOSIZIONE

PS (polyester) 55%, PU (polyurethane) 35%,
CO (cotton) 10%

HEIGHT
ALTEZZA

cm ≥ 140

WEIGHT
PESO

<. Gr/rntl 990 ± 5%

ABRASION
ABRASIONE

Giri ≥ 50.000

PILLING

≥ 4/5

LIGHT FASTNESS
SOLIDITÀ ALLA LUCE

≥ 4

STABLE SIZE IN WATER
DIMENSIONE STAB IN ACQUA

% 0,5 ± 0,5 %

COLOUR FASTNESS TO WASHING
RESISTENZA COLORE AL LAVAGGIO

≥ 4

RUBBING FASTNESS
RESISTENZA ALLO SFREGAMENTO

≥ 4

SEAM RESISTANCE
RESISTENZA DELLE CUCITURE

N ≥ 200

CERTIFICATES
CERTIFICATI

Class 1 IM
UNI 9175:2010
UNI 9176:2010
US CA TB 117:2013
BS5852 cigarette and
match test

EN 1021 part 1/2
IMO MED - FTP Code 307
part 8
OEKO-TEX
STANDARD 100
18CX00080 CENTROCOT

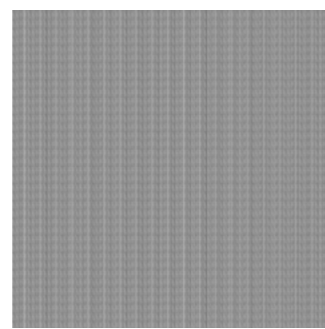
CLEANING
LAVAGGIO



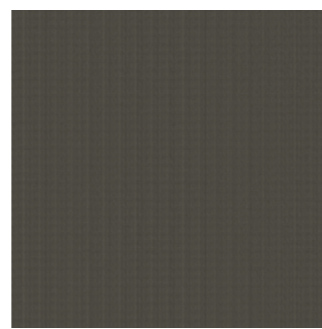
CATEGORY

Velluto Fila

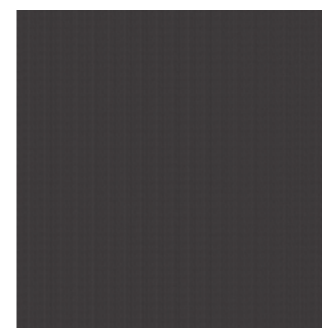
5021



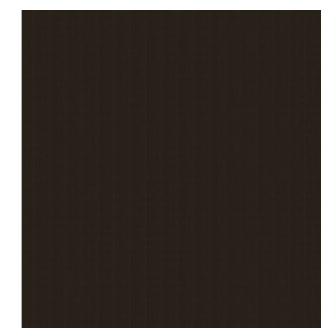
001



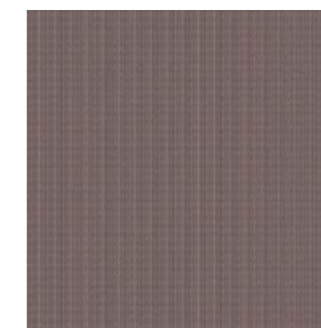
004



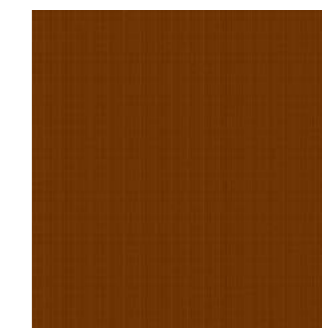
005



010



011



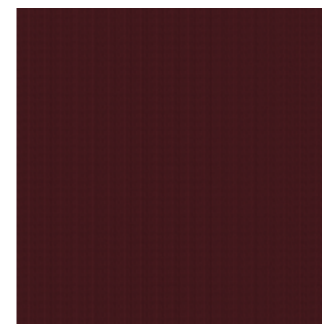
015



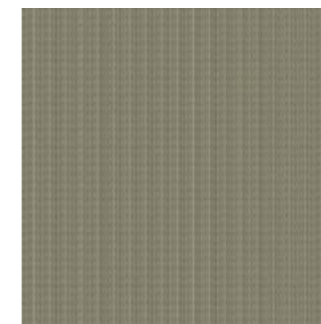
027



029



030



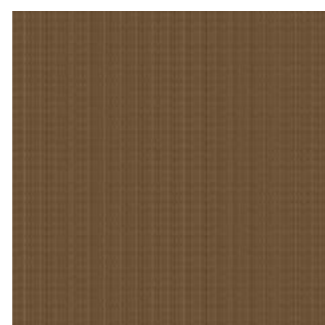
035



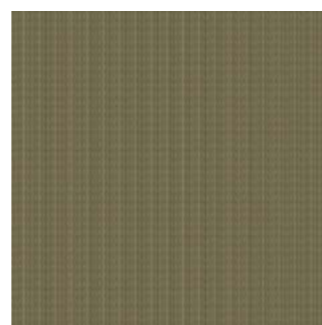
036



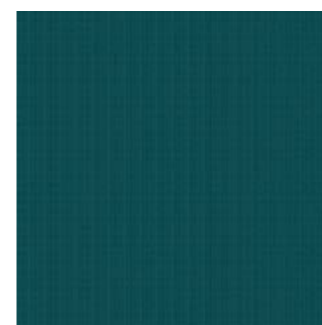
039



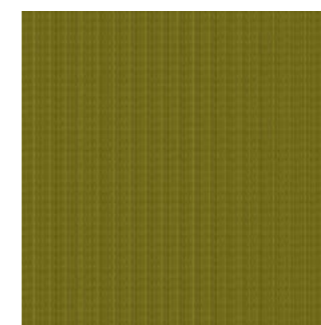
040



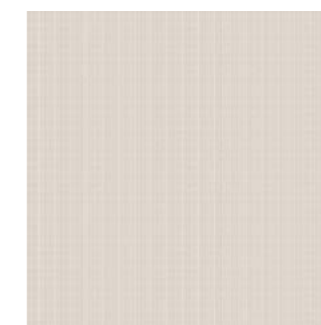
041



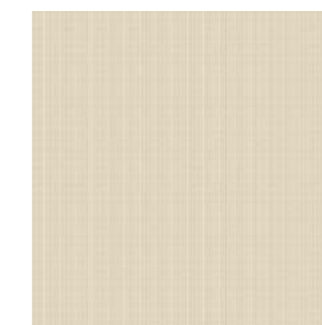
042



043



101



135

Velvet Likewool

cod. 5067 FR

Wool effect print on velvet

The elegance of velvet is enhanced by the wool look, making it smooth with a soft, light touch. A sensorial experience that transmits elegance, where thanks to the softness the serious and formal feel of the velvet is attenuated, leaving room for a feeling of warmth, for welcoming and informal furnishings.

Easy to clean, fire retardant, highly resistant to abrasion and tearing, colourfast to light, washing and rubbing, it also guarantees an excellent resistance to seam slippage. It is certified for all contract uses, including nautical.

Stampa effetto lanetta su velluto

L'eleganza del velluto viene esaltata dall'effetto wool, rendendolo fluido e dal tocco soft e leggero. Una esperienza sensoriale che trasmette eleganza, dove grazie alla morbidezza il risultato serio e formale del velluto viene smorzato, lasciando spazio ad una sensazione di calore, per arredi cozy e informali. Facile da pulire, ignifugo, altamente resistente all'abrasione e alla rottura, stabile al colore, in termini di luce, di lavaggio e di sfregamento, inoltre garantisce un'ottima resistenza allo scorrimento delle cuciture. Certificato per tutti gli utilizzi contract, compreso il settore navale.

COMPOSITION
COMPOSIZIONE

PS (polyester) 55%, PU (polyurethane) 35%,
CO (cotton) 10%

HEIGHT
ALTEZZA

cm ≥ 140

WEIGHT
PESO

<. Gr/rntl 990 ± 5%

ABRASION
ABRASIONE

Giri ≥ 50.000

PILLING

≥ 4/5

LIGHT FASTNESS
SOLIDITÀ ALLA LUCE

≥ 4

STABLE SIZE IN WATER
DIMENSIONE STAB IN ACQUA

% 0,5 ± 0,5 %

COLOUR FASTNESS TO WASHING
RESISTENZA COLORE AL LAVAGGIO

≥ 4

RUBBING FASTNESS
RESISTENZA ALLO SFREGAMENTO

≥ 4

SEAM RESISTANCE
RESISTENZA DELLE CUCITURE

N ≥ 200

CERTIFICATES
CERTIFICATI

Class 1 IM
UNI 9175:2010
UNI 9176:2010
US CA TB 117:2013
BS5852 cigarette and
match test

EN 1021 part 1/2
IMO MED - FTP Code 307
part 8
OEKO-TEX
STANDARD 100
18CX00080 CENTROCOT

CLEANING
LAVAGGIO



CATEGORY

Velvet Likewool

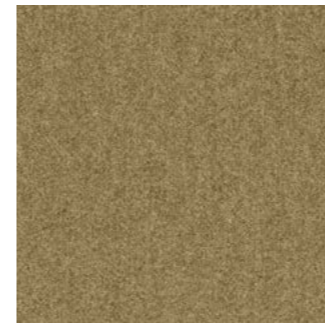
5067 FR



001



002



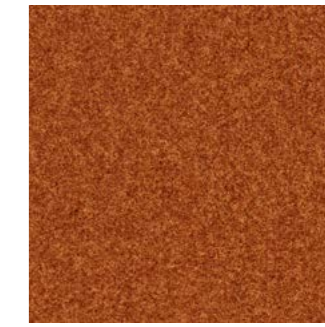
003



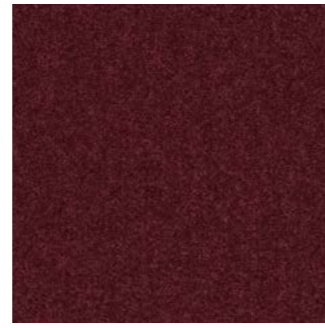
004



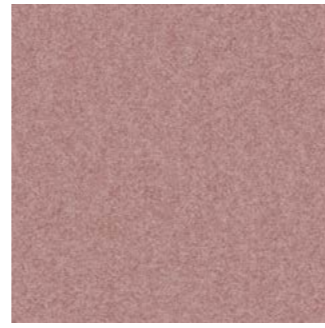
005



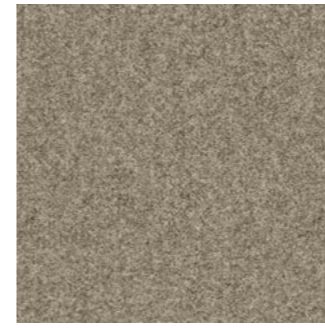
006



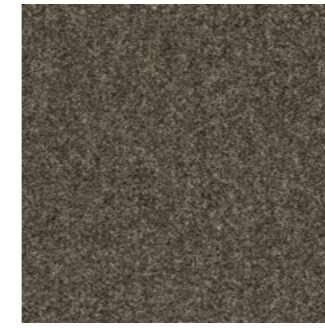
007



008



009



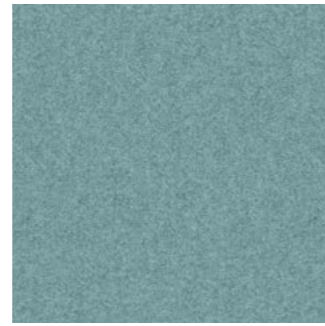
010



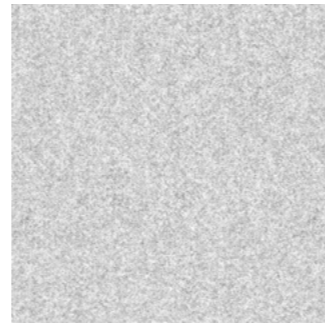
011



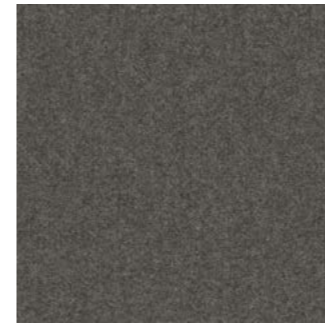
012



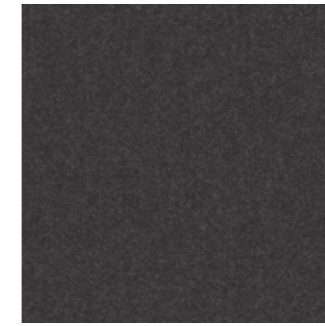
014



015



016



017

Flower Power cod. 5100

Floral print on velvet
The floral mood comes to interior design with an outburst of naturalistic motifs with a touch of romance.
It is difficult to escape the beauty of flowers, recalling gardens of a thousand colours and meadows of heady scents, and when the flowers are laid on a velvet lawn the impact is quite unique.
Easy to clean, flame-retardant, highly resistant to abrasion and tearing, resistant to colours, light, washing and rubbing, it also provides outstanding resistance to seam slippage. Certified for all contract uses, including marine.

Stampa floreale su velluto
Il mood floreale arriva nell'home design investendo con un'esplosione di motivi naturalistici dal gusto romantico.
Difficile resistere alla bellezza dei fiori, che porta alla mente giardini dai mille colori e prati dai profumi inebrianti, e quando i fiori vengono posati su un prato di velluto l'effetto è unico.
Facile da pulire, ignifugo, altamente resistente all'abrasione e alla rottura, stabile al colore, in termini di luce, di lavaggio e di sfregamento, inoltre garantisce un'ottima resistenza allo scorrimento delle cuciture. Certificato per tutti gli utilizzi contract, compreso il settore navale.

COMPOSITION
COMPOSIZIONE

PS (polyester) 55%, PU (polyurethane) 35%,
CO (cotton) 10%

HEIGHT
ALTEZZA

cm ≥ 140

WEIGHT
PESO

<. Gr/rntl 990 ± 5%

ABRASION
ABRASIONE

Giri ≥ 50.000

PILLING

≥ 4/5

LIGHT FASTNESS
SOLIDITÀ ALLA LUCE

≥ 4

STABLE SIZE IN WATER
DIMENSIONE STAB IN ACQUA

% 0,5 ± 0,5 %

COLOUR FASTNESS TO WASHING
RESISTENZA COLORE AL LAVAGGIO

≥ 4

RUBBING FASTNESS
RESISTENZA ALLO SFREGAMENTO

≥ 4

SEAM RESISTANCE
RESISTENZA DELLE CUCITURE

N ≥ 200

CERTIFICATES
CERTIFICATI

Class 1 IM
UNI 9175:2010
UNI 9176:2010
US CA TB 117:2013
BS5852 cigarette and
match test

EN 1021 part 1/2
IMO MED - FTP Code 307
part 8
OEKO-TEX
STANDARD 100
18CX00080 CENTROCOT

CLEANING
LAVAGGIO



CATEGORY

Flower Power



001



002



003



005



044

5100

Purple cod. 5117 FR

Fantasy print on velvet
A cashmere pattern, a kind of lace made even more special by the chromatic effects found in nature reinterpreted in a smoky key. This particular pattern can be defined as a true evergreen in the field of design in various variations over time and is distinguished from many others by its ancient origin. In fact, it dates back to ancient Mesopotamia. It came from the Kashmir regions of India, but passed through the court of Napoleon of Bonaparte, until it arrived in our days on the most important catwalks of Milan or Paris. From fashion to design, therefore, to make both furnishings and ambiances distinctive.

Stampa fantasia su velluto
Una fantasia cashmere, una sorta di pizzo reso ancora più particolare dai risultati cromatici presenti in natura reinterpretati in chiave smoky. Questa speciale fantasia può essere definita un vero evergreen nel campo del design in declinazioni differenti nel corso del tempo e si distingue da tanti altri per la sua origine antica, risalente infatti all'antica Mesopotamia. Arriva dalle regioni del Kashmir in India, ma passerà per la corte di Napoleone di Bonaparte, fino ad arrivare ai giorni nostri sulle passerelle più importanti di Milano o Parigi. Quindi dalla moda al design per rendere distintivi sia gli arredi che gli ambienti.

COMPOSITION
COMPOSIZIONE

PS (polyester) 55%, PU (polyurethane) 35%,
CO (cotton) 10%

HEIGHT
ALTEZZA

cm ≥ 140

WEIGHT
PESO

<. Gr/rntl 990 ± 5%

ABRASION
ABRASIONE

Giri ≥ 50.000

PILLING

≥ 4/5

LIGHT FASTNESS
SOLIDITÀ ALLA LUCE

≥ 4

STABLE SIZE IN WATER
DIMENSIONE STAB IN ACQUA

% 0,5 ± 0,5 %

COLOUR FASTNESS TO WASHING
RESISTENZA COLORE AL LAVAGGIO

≥ 4

RUBBING FASTNESS
RESISTENZA ALLO SFREGAMENTO

≥ 4

SEAM RESISTANCE
RESISTENZA DELLE CUCITURE

N ≥ 200

CERTIFICATES
CERTIFICATI

Class 1 IM
UNI 9175:2010
UNI 9176:2010
US CA TB 117:2013
BS5852 cigarette and
match test

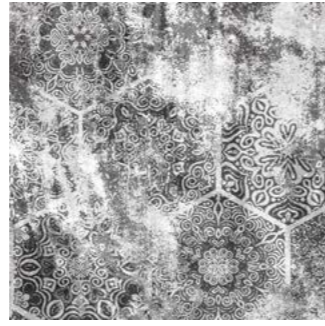
EN 1021 part 1/2
IMO MED - FTP Code 307
part 8
OEKO-TEX
STANDARD 100
18CX00080 CENTROCOT

CLEANING
LAVAGGIO



CATEGORY

Purple



001



002



003



004



005



006

5117 FR



007



008

Safari Collection

cod. 5176 - 5177 - 5178 - 5184

Printed fauna and flora on velvet
 Royal peacocks, spotted jaguars, zebras, exotic palms, majestic feathers and pink flamingos. These are the characters printed on brown, black or white velvet. A safari imagery that has conquered the design world. Adventurous motifs that create exotic and hyper-sophisticated scenarios.

Stampa animali su velluto
 Pavoni reali, giaguari maculati, zebre, palme esotiche, piume maestose, e fenicotteri rosa: questi sono i principali protagonisti stampati su velluti marroni, neri o bianchi. Un immaginario safari che ha conquistato il mondo del design. Pattern avventurosi che creano scenari esotici e iper-sofisticati.

CATEGORY

COMPOSITION
 COMPOSIZIONE

PS (polyester) 55%, PU (polyurethane) 35%,
 CO (cotton) 10%

HEIGHT
 ALTEZZA

cm ≥ 140

WEIGHT
 PESO

<. Gr/rntl 990 ± 5%

ABRASION
 ABRASIONE

Giri ≥ 50.000

PILLING

≥ 4/5

LIGHT FASTNESS
 SOLIDITÀ ALLA LUCE

≥ 4

STABLE SIZE IN WATER
 DIMENSIONE STAB IN ACQUA

% 0,5 ± 0,5 %

COLOUR FASTNESS TO WASHING
 RESISTENZA COLORE AL LAVAGGIO

≥ 4

RUBBING FASTNESS
 RESISTENZA ALLO SFREGAMENTO

≥ 4

SEAM RESISTANCE
 RESISTENZA DELLE CUCITURE

N ≥ 200

CERTIFICATES
 CERTIFICATI

Class 1 IM
 UNI 9175:2010
 UNI 9176:2010
 US CA TB 117:2013
 BS5852 cigarette and
 match test

EN 1021 part 1/2
 IMO MED - FTP Code 307
 part 8
 OEKO-TEX
 STANDARD 100
 18CX00080 CENTROCOT

CLEANING
 LAVAGGIO



Safari



5176_001



5176_002



5176_003



5176_004



5177_001



5177_002

5176

5177

5178

5184



5177_003



5177_004



5178_001



5178_002



5178_003



5178_004



5178_005



5184_001



5184_002



5184_003



5184_004



www.zonaliving.it